



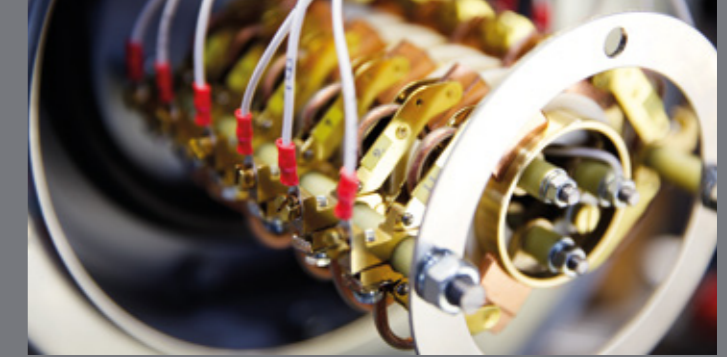
Hartmann & König
STROMZUFÜHRUNGS AG



Express-Lieferprogramm
Federleitungstrommeln & Zubehör



- 48h-Express-Lieferprogramm: Federleitungstrommeln mit Zubehör (Raste, Rollenjoch, Ziehstrumpf)
- bewährte Ausführung und Qualität „made in Germany“
- Für Horizontal- und Vertikalabzug · Linksabzug
- Schutzart IP 55
- Technische Erläuterungen, Maßblätter sowie allgemeine Lieferbedingungen siehe Katalog Federleitungstrommeln



Federleitungstrommeln

| Artikel-Nr. | Horizontal-abzug | Vertikal-abzug | Trommeltyp |
|-------------|------------------|----------------|------------|
|-------------|------------------|----------------|------------|

Wickellänge in Meter

4 x 1,5 mm², Ø 11,2 mm, 0,16 kg/m

| | | | |
|------------|----|----|----------------|
| E1075-5000 | 7 | 7 | LT155/108-4-26 |
| E1076-5000 | 12 | 12 | LT180/131-4-26 |
| E1076-5005 | 27 | 18 | LT180/231H4-26 |
| E1077-5008 | 26 | 26 | LT220/251H4-26 |
| E1079-5011 | 47 | 35 | LT300/252H4-26 |

5 x 1,5 mm², Ø 11,8 mm, 0,18 kg/m

| | | | |
|------------|----|----|----------------|
| E1075-5001 | 7 | 7 | LT155/108-5-26 |
| E1076-5001 | 12 | 12 | LT180/131-5-26 |
| E1076-5006 | 20 | 18 | LT180/231H5-26 |
| E1077-5009 | 26 | 25 | LT220/251H5-26 |
| E1079-5012 | 47 | 31 | LT300/252H5-26 |

7 x 1,5 mm², Ø 13,3 mm, 0,23 kg/m

| | | | |
|------------|----|----|----------------|
| E1075-5002 | 7 | 7 | LT155/108-7-26 |
| E1076-5002 | 10 | 10 | LT180/131-7-26 |
| E1077-5002 | 12 | 12 | LT220/151-7-26 |
| E1077-5010 | 20 | 20 | LT220/251H7-26 |
| E1078-5002 | 26 | 24 | LT221/251H7-26 |
| E1079-5022 | 35 | 34 | LT300/272H7-26 |
| E1079-5013 | 49 | 24 | LT300/252H7-26 |

12 x 1,5 mm², Ø 16,9 mm, 0,36 kg/m

| | | | |
|------------|----|----|-----------------|
| E1076-5003 | 7 | 7 | LT180/131-12-26 |
| E1077-5003 | 12 | 12 | LT220/151-12-26 |
| E1077-5011 | 22 | 15 | LT220/251H12-26 |
| E1078-5003 | 29 | 15 | LT221/251H12-26 |
| E1079-5004 | 22 | 22 | LT300/252-12-26 |
| E1079-5014 | 50 | 15 | LT300/252H12-26 |

18 x 1,5 mm², Ø 17,9 mm, 0,47 kg/m

| | | | |
|------------|----|----|-----------------|
| E1077-5004 | 8 | 8 | LT220/151-18-26 |
| E1078-5004 | 18 | 12 | LT221/251H18-26 |
| E1079-5005 | 23 | 23 | LT300/252-18-26 |
| E1079-5024 | 29 | 21 | LT300/272H18-26 |
| E1081-5006 | 73 | 14 | LT420/283H18-36 |

Federleitungstrommeln

| Artikel-Nr. | Horizontal-abzug | Vertikal-abzug | Trommeltyp |
|-------------|------------------|----------------|------------|
|-------------|------------------|----------------|------------|

Wickellänge in Meter

24 x 1,5 mm², Ø 22,6 mm, 0,59 kg/m

| | | | |
|------------|----|----|-----------------|
| E1079-5006 | 24 | 19 | LT300/252-24-36 |
| E1081-5011 | 41 | 22 | LT420/253-24-36 |

30 x 1,5 mm², Ø 24,2 mm, 0,71 kg/m

| | | | |
|------------|----|----|-----------------|
| E1079-5007 | 20 | 16 | LT300/252-30-36 |
| E1081-5012 | 38 | 20 | LT420/253-30-36 |

4 x 2,5 mm², Ø 12,1 mm, 0,21 kg/m

| | | | |
|------------|----|----|----------------|
| E1075-5000 | 7 | 7 | LT155/108-4-26 |
| E1076-5000 | 10 | 10 | LT180/131-4-26 |
| E1076-5005 | 18 | 16 | LT180/231H4-26 |
| E1077-5008 | 26 | 26 | LT220/251H4-26 |
| E1079-5011 | 46 | 27 | LT300/252H4-26 |

5 x 2,5 mm², Ø 12,8 mm, 0,24 kg/m

| | | | |
|------------|----|----|----------------|
| E1075-5001 | 7 | 7 | LT155/108-5-26 |
| E1076-5001 | 11 | 11 | LT180/131-5-26 |
| E1076-5006 | 18 | 14 | LT180/231H5-26 |
| E1077-5009 | 26 | 23 | LT220/251H5-26 |
| E1079-5012 | 46 | 23 | LT300/252H5-26 |

7 x 2,5 mm², Ø 14 mm, 0,31 kg/m

| | | | |
|------------|----|----|----------------|
| E1076-5002 | 10 | 10 | LT180/131-7-26 |
| E1077-5002 | 12 | 12 | LT220/151-7-26 |
| E1077-5010 | 17 | 17 | LT220/251H7-26 |
| E1078-5002 | 26 | 18 | LT221/251H7-26 |
| E1079-5013 | 47 | 18 | LT300/252H7-26 |
| E1079-5022 | 36 | 30 | LT300/272H7-26 |

12 x 2,5 mm², Ø 20,2 mm, 0,48 kg/m

| | | | |
|------------|----|----|-----------------|
| E1077-5003 | 10 | 10 | LT220/151-12-26 |
| E1078-5003 | 16 | 12 | LT221/251H12-26 |
| E1079-5004 | 25 | 23 | LT300/252-12-26 |

Federleitungstrommeln

| Artikel-Nr. | Horizontal-abzug | Vertikal-abzug | Trommeltyp |
|-------------|------------------|----------------|------------|
|-------------|------------------|----------------|------------|

Wickellänge in Meter

18 x 2,5 mm², Ø 20,6 mm, 0,68 kg/m

| | | | |
|------------|----|---|-----------------|
| E1077-5004 | 8 | 8 | LT220/151-18-26 |
| E1078-5004 | 15 | 8 | LT221/251H18-26 |
| E1079-5015 | 26 | 8 | LT300/252H18-26 |

24 x 2,5 mm², Ø 25,5 mm, 0,82 kg/m

| | | | |
|------------|----|----|-----------------|
| E1079-5018 | 22 | 22 | LT300/272-24-36 |
|------------|----|----|-----------------|

4 x 4 mm², Ø 13,4 mm, 0,28 kg/m

| | | | |
|------------|----|----|----------------|
| E1076-5004 | 10 | 10 | LT180/131-4-40 |
| E1077-5005 | 12 | 12 | LT220/151-4-40 |
| E1078-5005 | 26 | 20 | LT221/251H4-40 |
| E1079-5016 | 47 | 22 | LT300/252H4-40 |
| E1079-5025 | 35 | 34 | LT300/272H4-40 |

4 x 6 mm², Ø 14,8 mm, 0,37 kg/m

| | | | |
|------------|----|----|----------------|
| E1077-5006 | 12 | 12 | LT220/151-4-60 |
| E1077-5013 | 21 | 15 | LT220/251H4-60 |
| E1078-5006 | 26 | 15 | LT221/251H4-60 |
| E1079-5021 | 50 | 15 | LT300/252H4-60 |
| E1079-5026 | 36 | 25 | LT300/272H4-60 |
| E1081-5007 | 69 | 18 | LT420/283H4-60 |

4 x 10 mm², Ø 18,8 mm, 0,61 kg/m

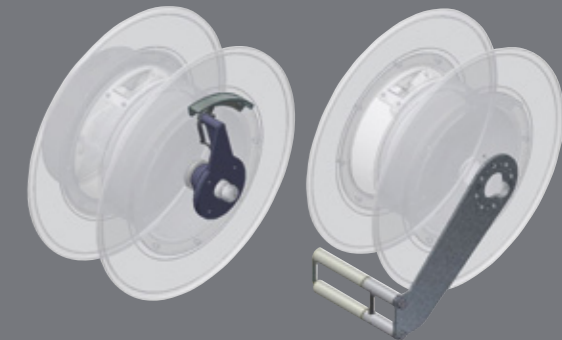
| | | | |
|------------|----|----|----------------|
| E1077-5006 | 7 | 7 | LT220/151-4-60 |
| E1077-5007 | 13 | 13 | LT220/251-4-60 |
| E1078-5006 | 20 | 9 | LT221/251H4-60 |
| E1079-5026 | 29 | 15 | LT300/272H4-60 |
| E1081-5013 | 40 | 24 | LT420/253-4-60 |

4 x 16 mm², Ø 23,4 mm, 0,92 kg/m

| | | | |
|------------|----|----|-----------------|
| E1079-5010 | 20 | 12 | LT300/252-4-125 |
| E1079-5020 | 18 | 18 | LT300/272-4-125 |

Zubehörprogramm

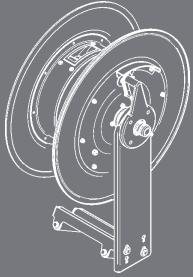
Im Rahmen des 48h-Trommelprogramms sind jetzt auch Zubehörteile, wie Raste, Rollenjoch (starr) und Ziehstrumpf auf Lager und zusammen mit den Eiltrommeln auslieferbar.



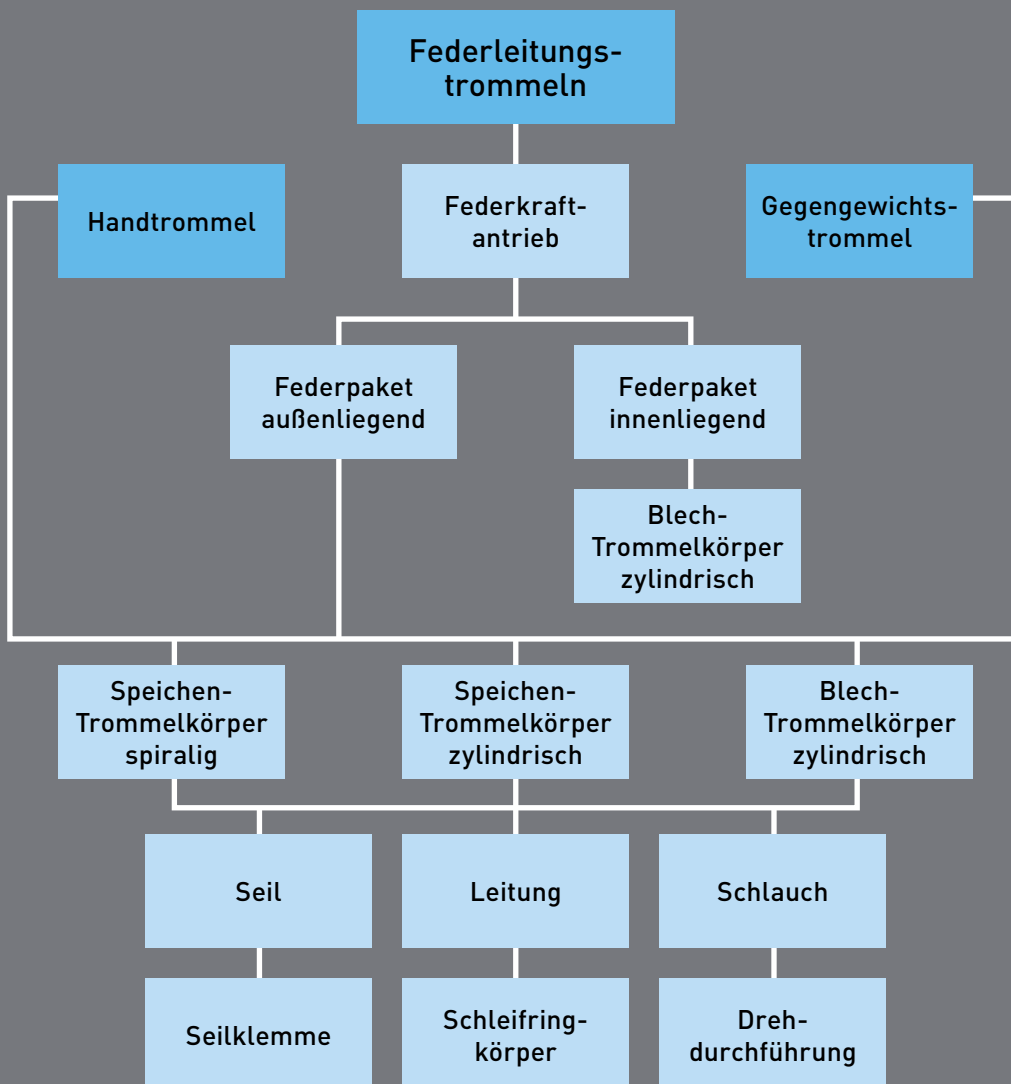
| Trommeltyp | Raste | Rollenjoch |
|------------|------------|------------|
| LT155 | E2315-2000 | E2350-2000 |
| LT180 | E2316-2000 | E2351-2000 |
| LT220 | E2317-2000 | E2352-2000 |
| LT221 | E2317-2000 | E2353-2000 |
| LT300 | E2319-2000 | E2354-2000 |
| LT420 | E2321-2000 | E2356-2000 |

| Leitungsdurchmesser | Ziehstrumpf |
|---------------------|-------------|
| Ø 09 - 12 mm | X2850-0912 |
| Ø 12 - 15 mm | X2850-1215 |
| Ø 15 - 20 mm | X2850-1520 |
| Ø 20 - 25 mm | X2850-2025 |
| Ø 25 - 30 mm | X2850-2530 |





Produktstruktur Federleitungstrommeln (FLT)



H&K_003_48h-Service_06/18_D_V1.2



Hartmann & König
STROMZUFÜHRUNGS AG

Hubert-und-Ursula-Herberger-Platz 1 | D-76676 Graben-Neudorf
Tel.: +49 7255 7120-0 | Fax: +49 7255 5038
E-Mail: info@hukag.com | Internet: www.hukag.com

